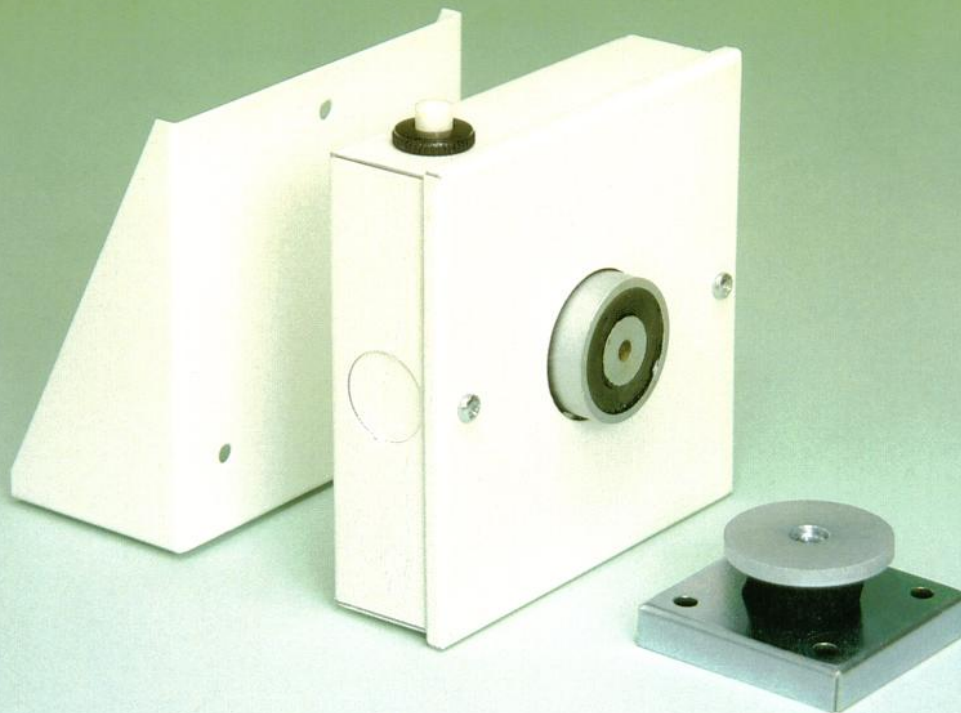


NEB Series Dual Voltage Magnetic Door Release Unit

Nebula Part No :-007MDH



General Description

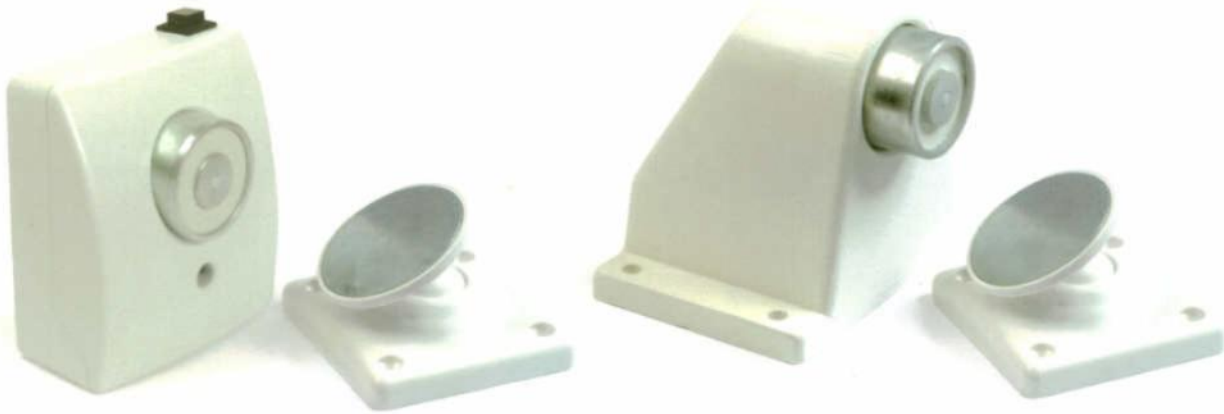
This magnetic door release unit is flexible in design and will accept an input of either 240v ac Mains or 24v dc Supply and can be wall or floor mounted. The unit is of slimline design and has a total depth of only 42mm. The unit comes in a smart white case and is suitable for use with any normal fire door. The unit can be wall mounted or with the use of matching floor bracket mounted at floor level. Low current electro magnet provides an attractive force of 20 lbs to secure keeper plate which is easily mounted to door surface. The door is released either automatically or by easily accessible manual release button mounted on side of case.

Technical Data

Dual voltage, has two inputs for either 240v ac 50 Hz mains or 24v dc supply.
Consumption, 65 mA.
Catch plate has swivel head for automatic alignment to magnet. (Bright zinc plated).
Magnetic pull, 20 lbs (9.09 Kgs approx).
Finish, white leathergrain plastisol.
Construction of 18 swg mild steel, approx size of 105mm square, depth 42 mm.

Your NEB Series Contact:

DRW & DRX Series Floor Mounting Door Retainer



Description

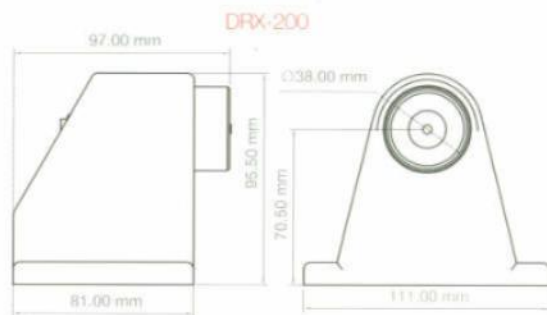
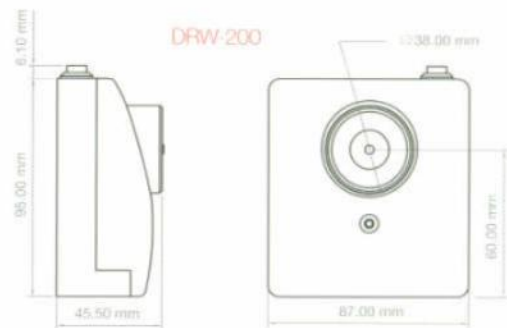
The new DRW series door retainers combine good looks, high performance and economy in one new low profile package.

Installation is simple, with knockouts provided for entry of surface mounted conduit, with ample room to connect external wiring to the 4.0 mm terminals.

Each DRW door retainer is fitted with a spring loaded release pin mounted centrally within the electromagnet. On power off, the release pin then ensures that the fire door is pushed away from the electro-magnet.

Additional accessory products are available, including floor brackets, chains and additional keeper plates.

Our new DRX range of door retainers is ideally suited to applications where maximum protection is needed against vandalism or accidental damage. It features a rugged cast aluminium housing, a holding magnet with integral ejection pin and a manual release switch.



Product Code:	DRW-L	DRW-M	DRX-200	DRX-500
Voltage:	24v dc	230v ac	24v dc	230v ac
Current Consumption:	45mA	12mA	45mA	90mA
Minimum Rated Holding Force:	112N (11.4 k)	112N (11.4 k)	200 N (20.4 k)	500 N (51 k)
Maximum Holding Force:	200N (20.4 k)	200N (20.4 k)	300 N (30.6 k)	750 N (76 k)
Residual Holding:	Zero	Zero	Zero	Zero
Voltage Tolerance:	+/- 10%	+/- 10%	+/- 10%	+/- 10%
Release Switch:	Yes	Yes	Yes	Yes
Protection:	IP51	IP51	IP40	IP 40
Keeper Adjustment:	+/- 30°	+/- 30°	+/- 30°	+/- 10°
Weight (per unit packed):	400g	400g	700g	1000g
Door Closer Power Size	Size 3-5	Size 3-5		